

*JP-AUSTRALIA*

Inflatable SUP product line 2019

# User Manual



# !!!WARNING!!!

JP-AUSTRALIA

**DO NOT USE THIS PRODUCT UNLESS YOU HAVE READ AND UNDERSTAND THESE WARNINGS AND INSTRUCTIONS WHICH ARE FOR YOUR SAFETY AND PROTECTION. THIS INFORMATION MAY BE SUBJECT TO CHANGE AT ANY TIME. PLEASE VISIT OUR WEBSITE AT: [www.jp-australia.com](http://www.jp-australia.com) FOR CURRENT UPDATES.**

**IF YOU ARE BELOW THE AGE OF 18, YOU SHOULD HAVE YOUR PARENT OR GUARDIAN READ THESE WARNINGS AND INSTRUCTIONS AND SHOULD NOT USE THIS PRODUCT UNLESS YOU ARE UNDER THE PROPER GUIDANCE AND SUPERVISION OF SUCH A PERSON.**

Familiarize yourself with this inflatable board before using it on the water in order to ensure safety and to prevent accidents. The use of this product exposes the user to many unavoidable and unexpected risks, *DANGERS* and *HAZARDS*. The suppliers of this product are not responsible for any damage to property or any personal injury caused by any use, misuse, abuse or irresponsible use of this product by the user.

## Recommended SUP/Windsurf practice:

Stand Up Paddling and Windsurfing are extremely diverse sports with many disciplines and ability levels. As with all sports there can be certain inherent risks. The following contains key security points to remember when using your JP-Australia board and/or JP-Australia Accessory. Observe the following safety standards and safe operating practices whenever using this product:

- SUP and Windsurfing can be very dangerous and physically demanding. The user of this product should understand that participating in both sports may involve serious injury or death.
- Children should always be under adult supervision.
- Seek SUP/Windsurfing instruction from a licensed or certified instructor.
- Check your equipment prior to use for signs of wear & failure, these should be repaired or replaced immediately and before further use.
- Take time to study the conditions including sea state, tides, currents, weather conditions and forecasts before you decide to go paddling/windsurfing. Beware of paddling/windsurfing in offshore or strong winds. Do not paddle in flood conditions. Never use this product in thunderstorms and lightning conditions.
- Be aware of the conditions as they change. Always return to the beach if there is a significant change in the conditions i.e. wind increasing and or waves increasing.
- Familiarize yourself with any new location before venturing onto the water. Ask the locals to tell you about any hazards. Beware of things such as rip currents, underwater obstacles and heavy shore break.
- Watch out for other beach users, especially swimmers and children. Make sure you keep your board and paddle under control at all times. Never use this product near other boat traffic, or watercrafts.
- Always use appropriate protective gear and wear a personal flotation device. Wear the correct protective clothing for the conditions such as a wetsuit or a UV top. Cold water and cold weather can result in hypothermia. Always carry identification.
- Wear a helmet when appropriate.

- Always use a SUP specific board leash (not supplied with board). Do not use ankle or knee leash if paddling in rivers! Use a river specific leash system with quick release within the reach of the hand (waist or chest belt).
- Make sure to stay hydrated during paddling. SUP is a physically demanding sport and dehydration can also occur in cold temperatures.
- Watch when surfacing after falling in. The board maybe closer than first imagined due to waves, wind, board leash etc.
- Never paddle alone.
- As you learn the sport, work within your limitations and do not exceed them.
- Never use this product in conditions that are beyond your ability (such as, but not limited to, high surf, riptides, currents or river rapids).
- Do not exceed maximum weight capacity. Regardless of the number of persons on board, the total weight of persons and equipment must not exceed maximum weight capacity.
- Do not operate the board under the influence of drugs or alcohol.
- Keep these warnings, cautions and instructions for future reference.

## Features



\*Mast plug to attach windsurfing rig, center fin and the center fin box only come with boards with windsurf option - WS.

Model Name	Vol. (L)	Capacity (kg)
AllroundAir 10'6" x 32" x 6" SE	318	155
AllroundAir 10'6" x 32" x 6" SE WS	318	155
AllroundAir 10'6" x 32" x 6" LE	318	155
AllroundAir 10'6" x 32" x 6" LEC	318	155
AllroundAir 11'0" x 34" x 6" SE	353	173
AllroundAir 11'0" x 34" x 6" LE	353	173
AllroundAir 11'0" x 34" x 6" LE WS	353	173
CruisAir 11'6" x 30" x 6" SE	311	152
CruisAir 11'6" x 30" x 6" SE WS	311	152
CruisAir 11'6" x 30" x 6" LE	311	152
CruisAir 11'6" x 30" x 6" LEC	311	152
CruisAir 12'6" x 32" x 6" SE	367	181
CruisAir 12'6" x 32" x 6" LE	367	181
SportstAir 12'6" x 26" x 6" SE	290	141
SportstAir 12'6" x 28" x 6" SE	311	152
SportstAir 12'6" x 30" x 6" SE	336	167
SportstAir 14'0" x 30" x 6" SE	377	184
Young Gun Air 8'10" x 31.5" x 5" LE WS	212	103
YoungGun RacAir 10'6" x 25" x 5" LE	207	101
SurfAir 9'7" x 32" x 4" SE	175	85
RivAir 9'6" x 35" x 6" SE	318	155
AnglAir 11'0" x 38" x 6" SE	419	206
AdventurAir 12'0" x 36" x 6" SE WS	405	201
MonstAir 16'0" x 58" x 6" SE WS	950	450
MonstAir 18'0" x 72" x 8" SE WS	1700	600

9" fin comes with: AllroundAir, CruisAir, Young Gun Air WS, SurfAir and AdventurAir.  
10" fin comes with: AllroundAir WS, CruisAir WS, SportstAir, Young Gun Air WS, Young Gun RacAir, AdventurAir and MonstAir. Kick-up fin comes with: RivAir and AnglAir.



## Instructions to inflate your board:

1 - Carefully roll out the board



2 - Push down and turn the valve pin Pin up to inflate



3 - Connect the pump hose to the valve and pump



5 - Pump your board to 15 psi (1 bar)



4 - Turn from double action to single action when it is difficult to pump



### Warning

Any use of an air compressor may result in poor performance or damage to the board, and automatically avoids all warranties. If you leave your board exposed to the hot sun, check the pressure and deflate it slightly. Otherwise the board may become over inflated and stretch the material. The ambient temperature affects the tube's internal pressure: a variation of 1°C/ 1.8°F causes a variation of the pressure in the tube of +/- 4 mBar (0.06psi).

## Inserting the fins:

1 - Insert the front part of the fin into the finbox



2 - Push the fin into the finbox



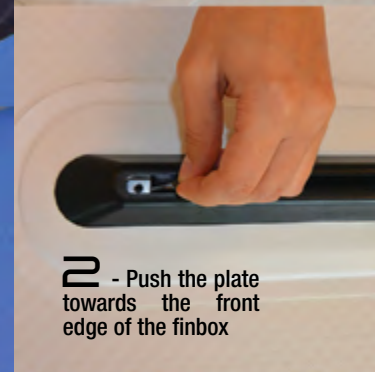
3 - Tighten the screw



1 - Insert the plate into the finbox



2 - Push the plate towards the front edge of the finbox



3 - Insert the pin of the fin into the finbox cavity and push the fin into the finbox



4 - Push the fin into the finbox and tighten the screw



1 - Place the fin base on the correct position



2 - Insert the fin and align the holes



3 - Insert the pin



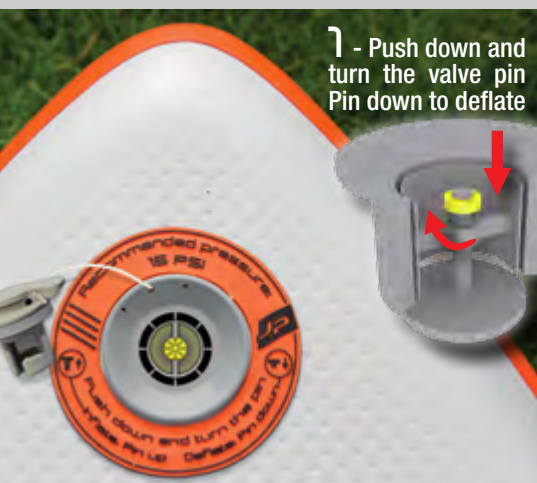
4 - Push the bungee into the recess





## Deflating the board + tips:

**JP-AUSTRALIA**



1 - Push down and turn the valve pin down to deflate

Whenever you take your board out of the water and deflate it, allow time for it to air out and dry. Neither the skin/hull nor the inside chambers will suffer from water damage, but stagnant water could cause mildew and foul odor.

### How to repair small punctures

Make sure that the board is fully deflated and lies flat.

1. Prepare a round patch no less than 3 inches or 7 centimeters in diameter.
2. Clean the patch and the area surrounding the leak with alcohol.
3. To contain excess glue, use masking tape to tape off the area around the patch.
4. Apply 3 thin, even coats of repair kit adhesive to both the surface of the board and the patch. Wait 5 minutes between each coat.
5. After the 3rd coat, wait 10-15 minutes before applying the patch. Use a hand roller to apply the patch evenly. Pay special attention to the edges.
6. Wait 24 hours before re-inflating.

- Perform all of your repairs in a well-ventilated area.
- Avoid inhaling glue vapors.
- Avoid contact with the skin or the eyes.
- Keep all repair materials (glue, solvents, etc.) away from the reach of children.
- The repairs on the welds must not be glued. Only the manufacturer of the board can perform repairs on the welds themselves.



2 - After deflation, roll up the board from the tail part



3 - Store the board into the bag for protection

### Maintenance

1. Clean and check the board as well as all the accessories. Make sure the board is completely dry before putting it away. Make sure that neither sand nor gravel remains inside the board or between the hull and the inner chambers: this could result in abrasion or even punctures while storing the board.
2. When storing your inflatable, keep it in a clean and dry place.

### JP-AUSTRALIA - LIMITED WARRANTY

Every JP-Australia product is subjected to rigid pre-sales quality control tests and is backed by our comprehensive warranty policy below.

JP-Australia warrants that this product, when it is purchased from an authorized JP-Australia dealer by a retail customer, will be free from defects in materials and workmanship for a period of two (2) years from the date of purchase by the original retail customer. This warranty is solely for the benefit of the original retail purchaser and may not be assigned.

For customer Limited Warranty claims, proof of purchase from an authorized JP-Australia dealer is required. If the date of purchase cannot be established, JP-Australia will make a determination based upon the last production year of the particular model, or on the condition of the equipment claimed.

If you have any questions about the JP-Australia Limited Warranty or procedures for making claims thereunder, please contact your local JP-Australia dealer or JP-Australia at [www.jp-australia.com](http://www.jp-australia.com). The JP-Australia Warranty Center will determine if a product is covered under this Limited Warranty. If covered, JP-Australia will, at JP-Australia's sole option, repair or replace the product in question.

All returns must be made through JP-Australia authorized dealers. JP-Australia does not accept returns directly from customers. Any repair or replacement of any product under this Limited Warranty is not available for ordinary wear and tear, including scratches, punctures, fading and print chipping, or for any damage caused by misuse, abuse, unauthorized modification or repairs, usage of components other than JP-Australia components, accident, heat, excessive exposure to sunlight, improper handling, storage, maintenance or care; incorrect setup, use in commercial, rental or teaching environments; any use of the product outside the recommended conditions as listed on the JP-Australia website: [www.jp-australia.com](http://www.jp-australia.com); use off the water; any blow or impact with a hard or spikey object or any other irresponsible use.

THE FOREGOING LIMITED WARRANTY IS EXCLUSIVE AND IN LIEU OF ALL OTHER WARRANTIES OF QUALITY AND PERFORMANCE, WRITTEN, ORAL OR IMPLIED AND ALL OTHER WARRANTIES, INCLUDING ANY IMPLIED WARRANTIES OF MERCHANTABILITY OR FITNESS FOR A PARTICULAR PURPOSE, ARE HEREBY DISCLAIMED. IN NO EVENT SHALL JP-AUSTRALIA BE LIABLE FOR SPECIAL, INDIRECT, INCIDENTAL, CONSEQUENTIAL, STATUTORY OR EXEMPLARY DAMAGES, WHETHER IN CONTRACT, TORT, NEGLIGENCE, STRICT LIABILITY OR OTHERWISE including, without limitation, loss to property other than this product, loss of use of said product, or other property or other economic losses. JP-Australia shall not be liable for contribution or indemnification, whatever the cause.

Some jurisdictions do not allow limitations on how long an implied warranty lasts and/or the exclusion or limitation of incidental or consequential damages, so the above limitation and exclusion may not apply to particular customers. JP-Australia obligations under any warranty shall be limited, to the greatest extent allowed by law, as provided in this JP-Australia Limited Warranty. This Limited Warranty gives you specific legal rights; you may also have other rights, which vary from one jurisdiction to another.

